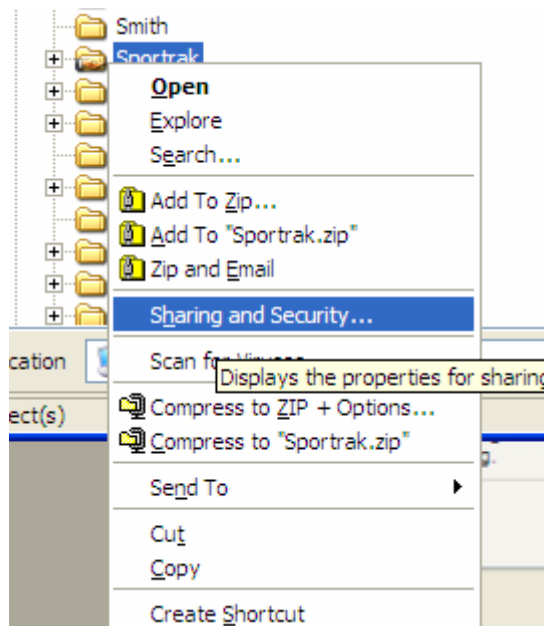


Using networked computers for SportsTrak data entry

Can be as simple as 2 laptops with cross-over cable, or a hub connecting multiple machines in a peer to peer arrangement.

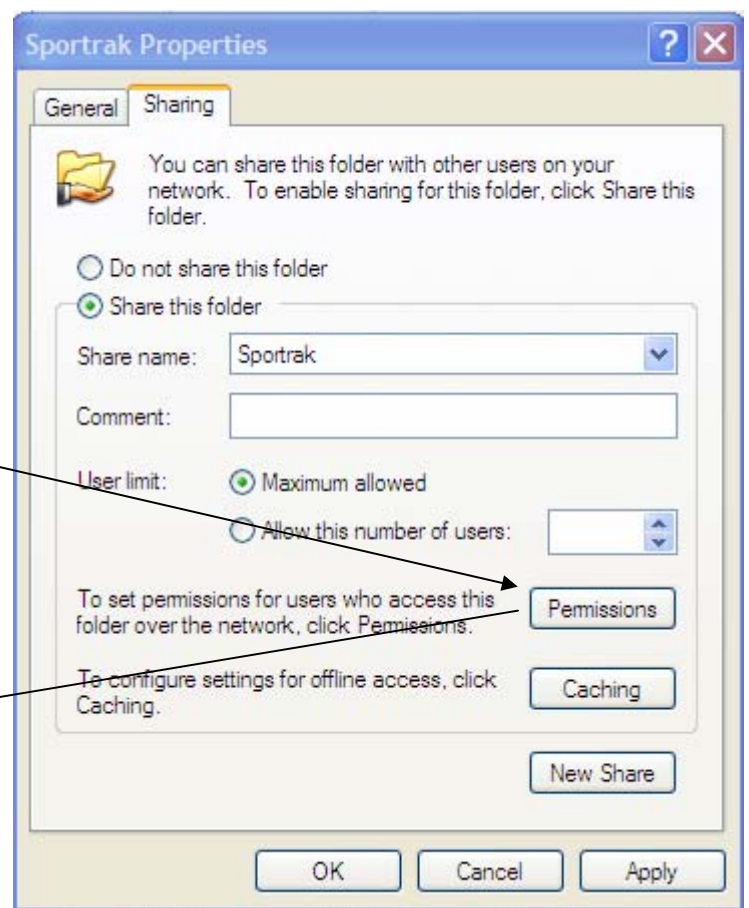
1. Have SportsTrak installed on each machine.
2. One machine has the actual data folder for your carnival. This folder must be shared.



In this example I am sharing the entire SportsTrak folder, which will include sub folders where data is located.

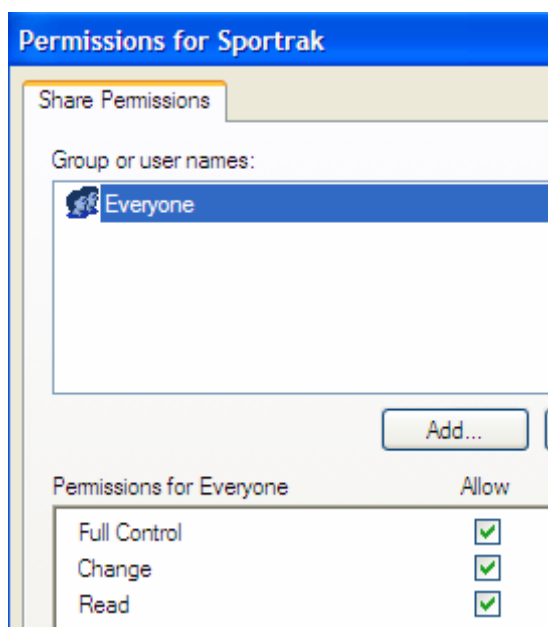
**Right-Click the folder to be shared.
Click "Sharing and security"**

The folder properties will appear (below)

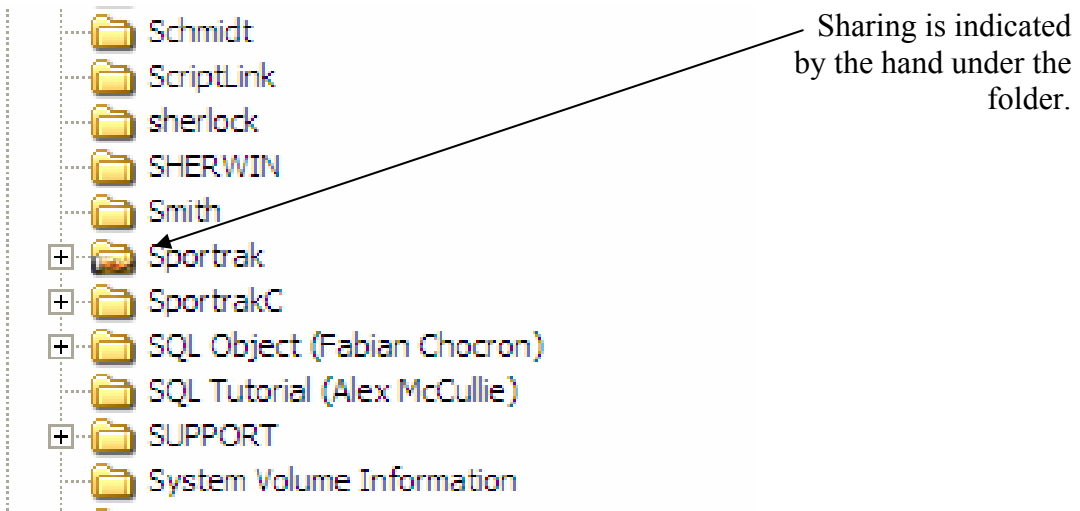


Give the folder a meaningful share name, which is what other machines will see.

Permissions by default should allow everyone full access. This is OK.



Click the OK button to exit.

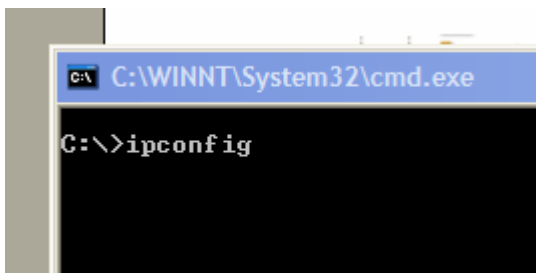


3. Check that each machine has an IP address within the same range.

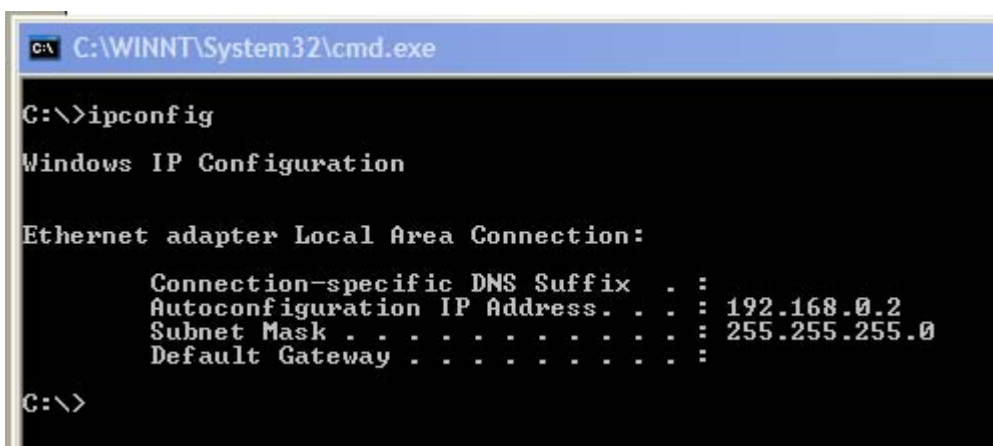
Do this by:

Clicking Start – Run – then type in “cmd” to run the command prompt.

At the prompt, *type “ipconfig”* to see your ip settings



(Type “exit” to close the command window when finished)



Note the address on the master machine, 192.168.0.2 and the subnet mask 255.255.255.0. (Your IP address will likely be different to the one shown here.)

All other linking computers must belong to the same address range, with the same subnet mask.

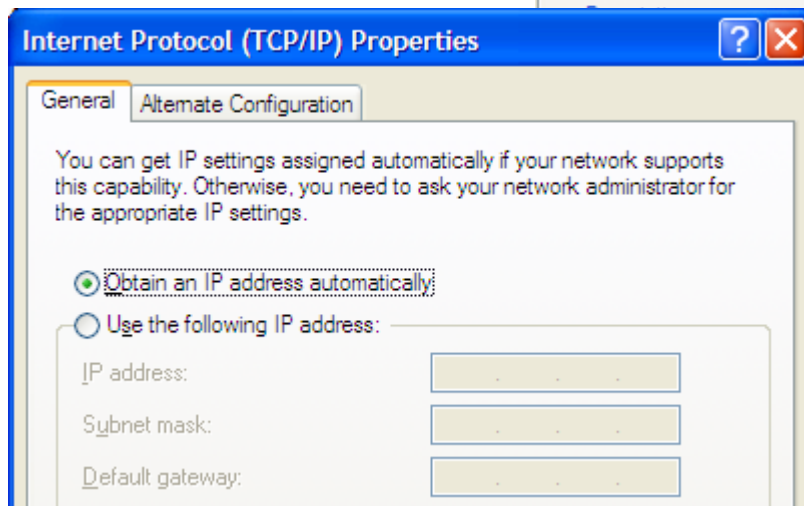
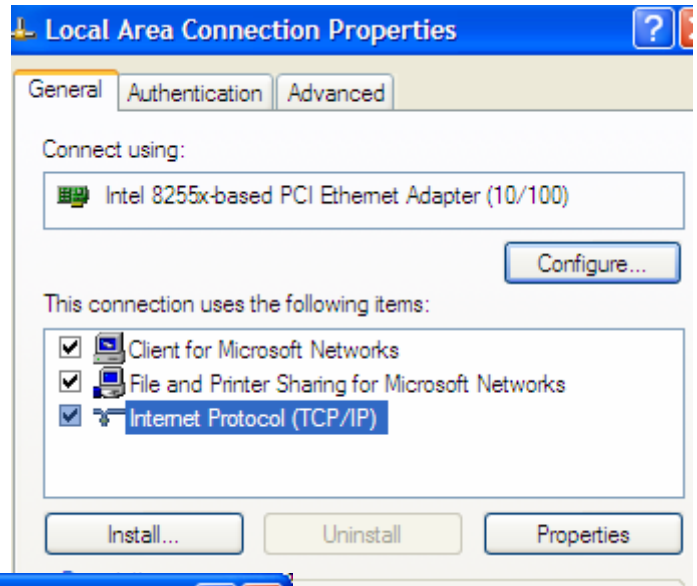
Check the IP range of each machine by typing “ipconfig” on each.

To change the IP range of the other machines, *go to Control Panel, Network Connections, right click Local Area Connection,*

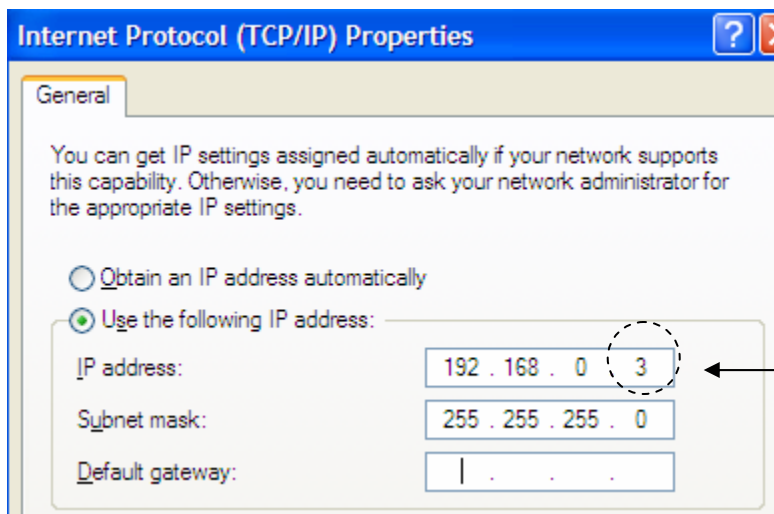
On the General tab, *highlight Internet Protocol (TCP/IP)*

Click on the Properties button

The setting is most likely to be as shown:
Obtain an IP address automatically.



This must be changed to a static IP address by specifying the address and subnet in the boxes shown.



The host machine's IP address was 192.168.0.2

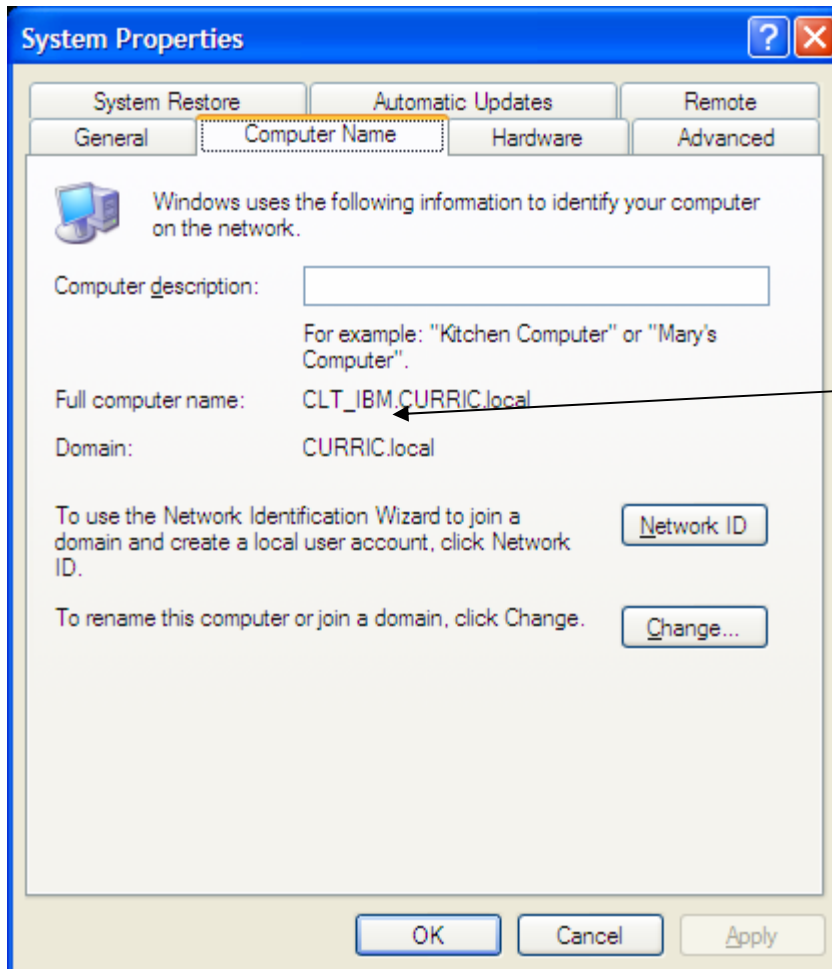
The other machines must have the 192.168.0 part identical, but a *different* value in the last section.

Thus 3, 4 or anything will do,

not above 254.

Note well, after the sharing is no longer required, **any machine that normally connects to a net work must have the IP details reset to their original value.** Therefore be careful to write down any specific settings before changing them.

4. **Connect the machines with a hub (2 or more pc's) or crossover cable (2 pc's)**
5. If you don't already know the main machine's name, **right click on My Computer, click Properties, and go to the Computer Name tab.**



This machine's name is:

CLT_IBM

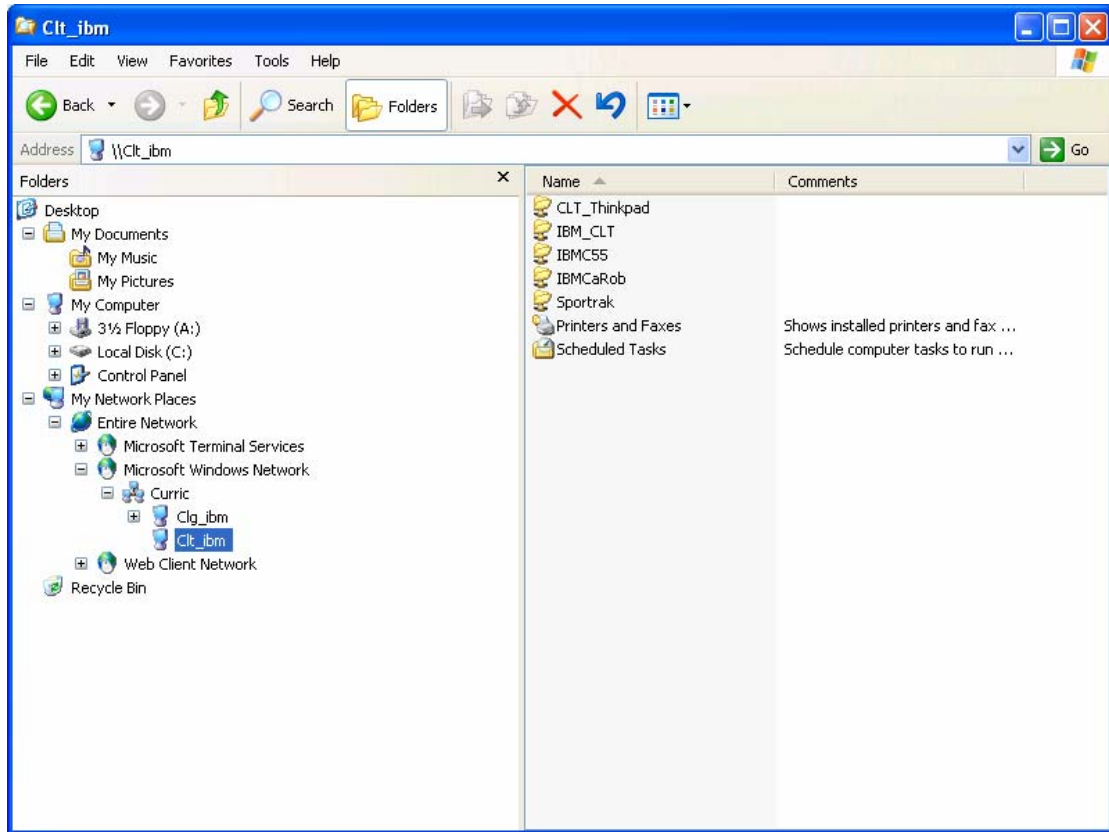
After the full stop doesn't matter.

You need to know this name so you can identify it from the other PC's.

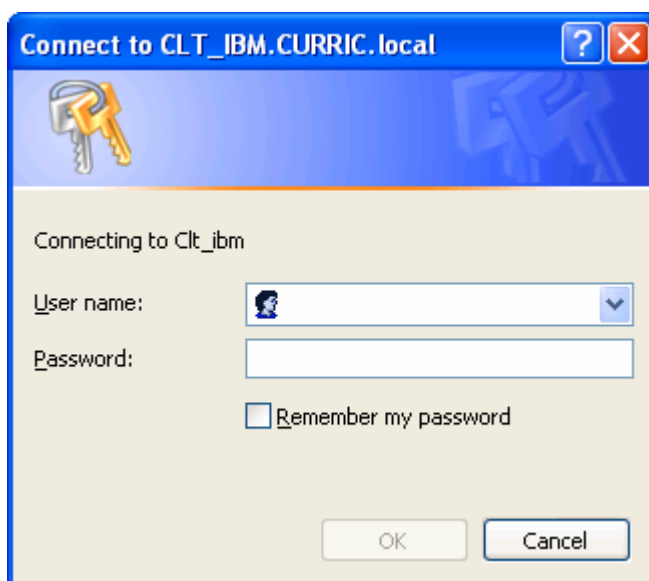
6. Fire up each linked computer in turn.

From My Computer or Windows Explorer, you should see the main PC.

(If not, click Start, Search, Computers or people, Computers on the network, and type in the main machine's name. Then click the Search button.)



When found, double click on the machine, and it may prompt for a login.

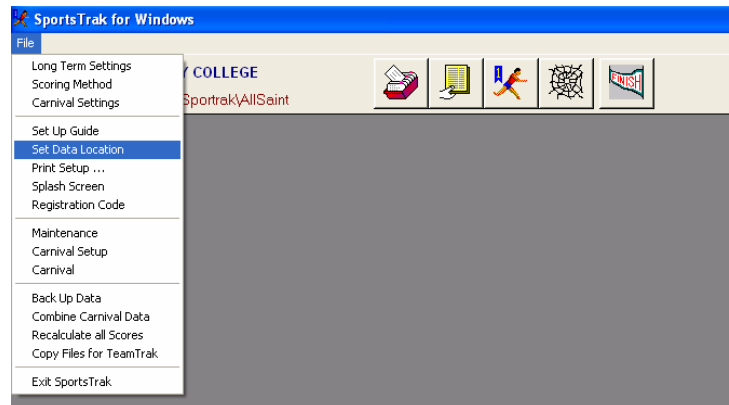


Enter details to log on to the main machine

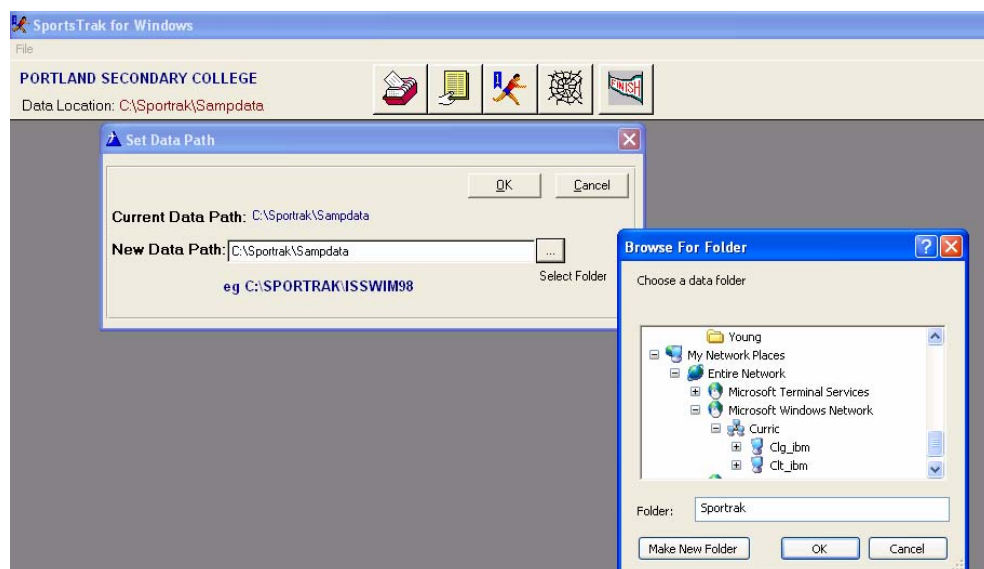
Run SportsTrak

From the File menu, choose Set Data Location

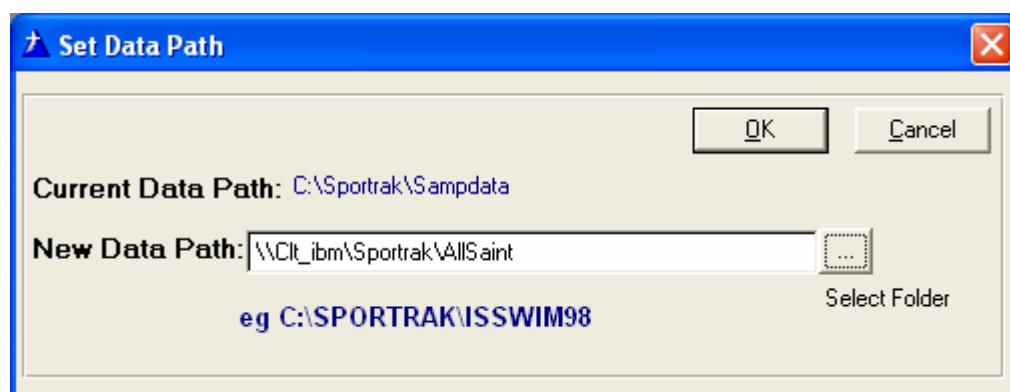
Use the ellipses button to drill down through to the data folder on the master machine.



Shown here via My Network Places, Microsoft Windows Network, down to CLT_IBM



When you finally select the correct data folder, it will look like this.



The is no drive letter; just: **\\Computer Name\Sharename\Subfolder**

This copy of SportsTrak is now reading the same data as the main machine.

As long as two machines don't enter data for the same event at once, all machines can enter results concurrently, significantly spreading workload.

Afterwards, remember to set any changed IP settings back to what they were.